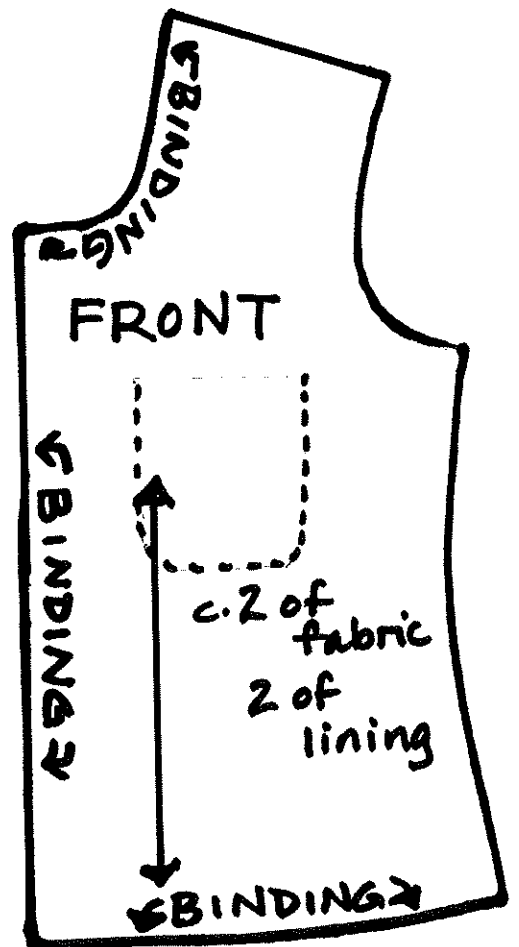
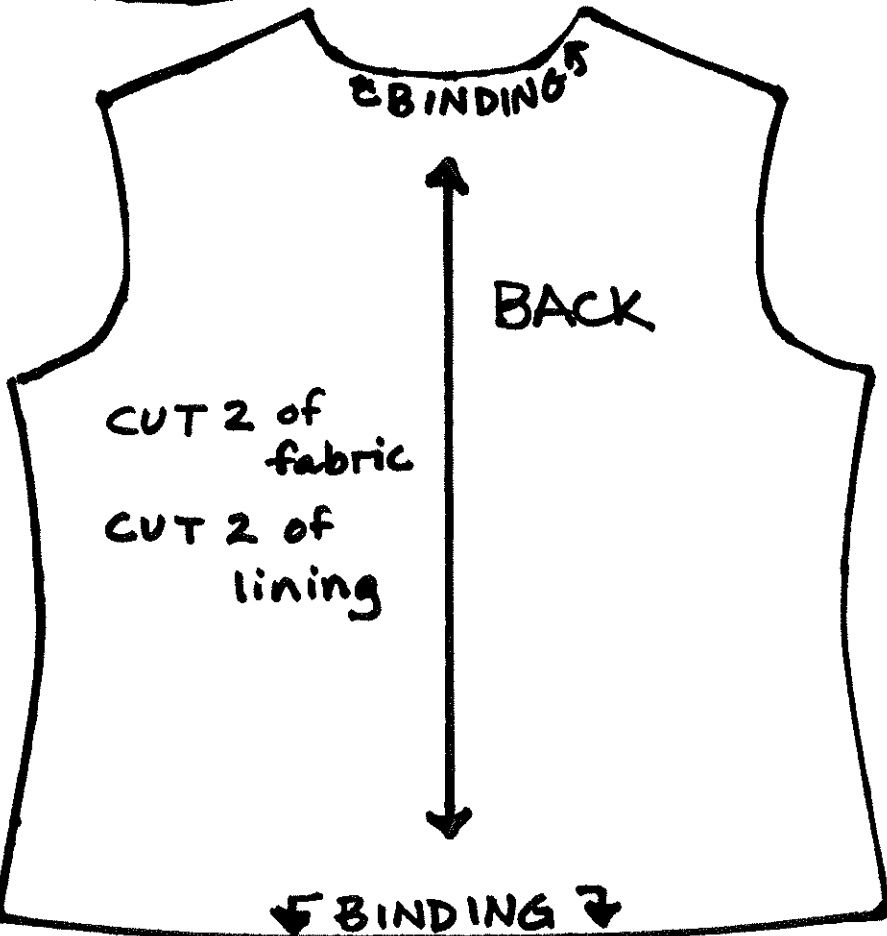
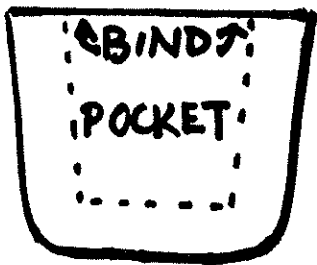
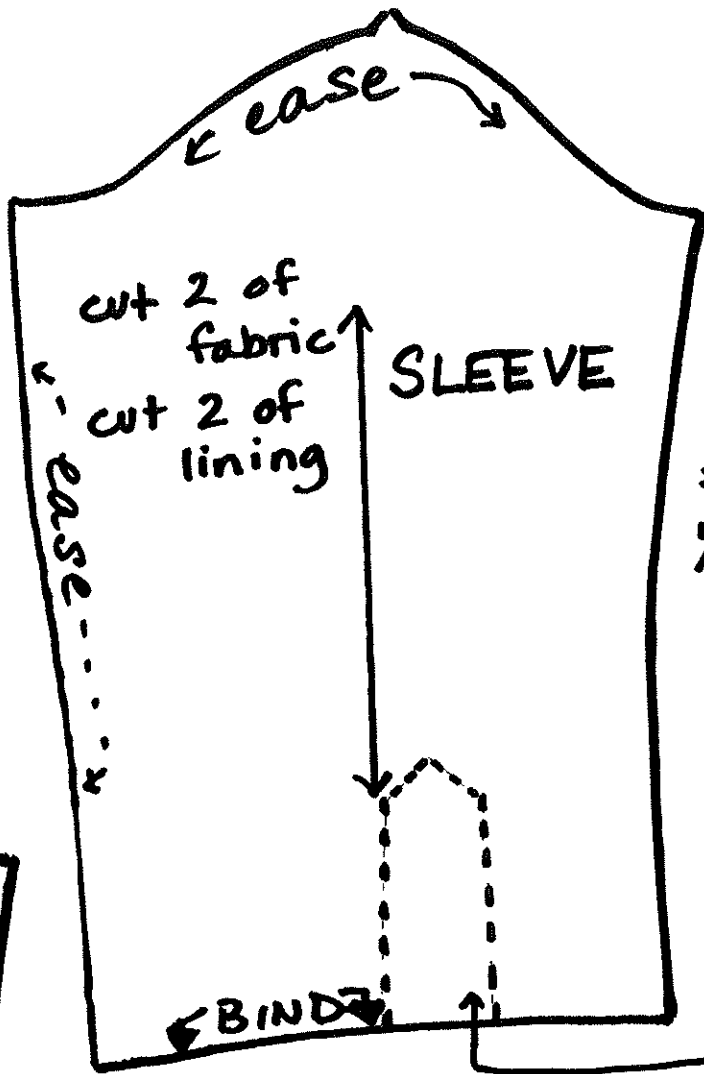
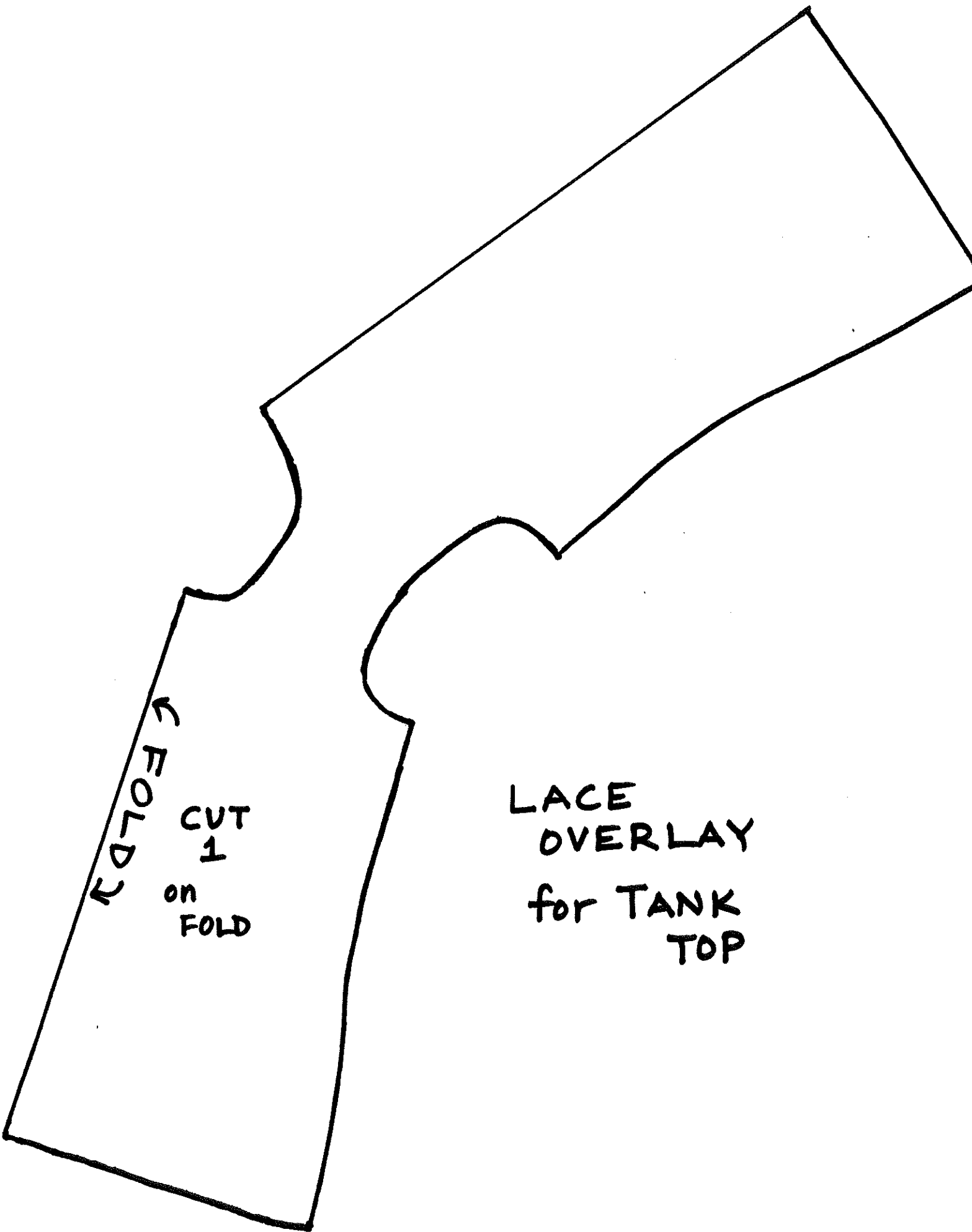


JACKET

1/4" SEAMS

(BIND NECK, FRONT EDGE, HEM, AND SLEEVE HEMS WITH 1/4" DOUBLE FOLD BIAS TAPE.)





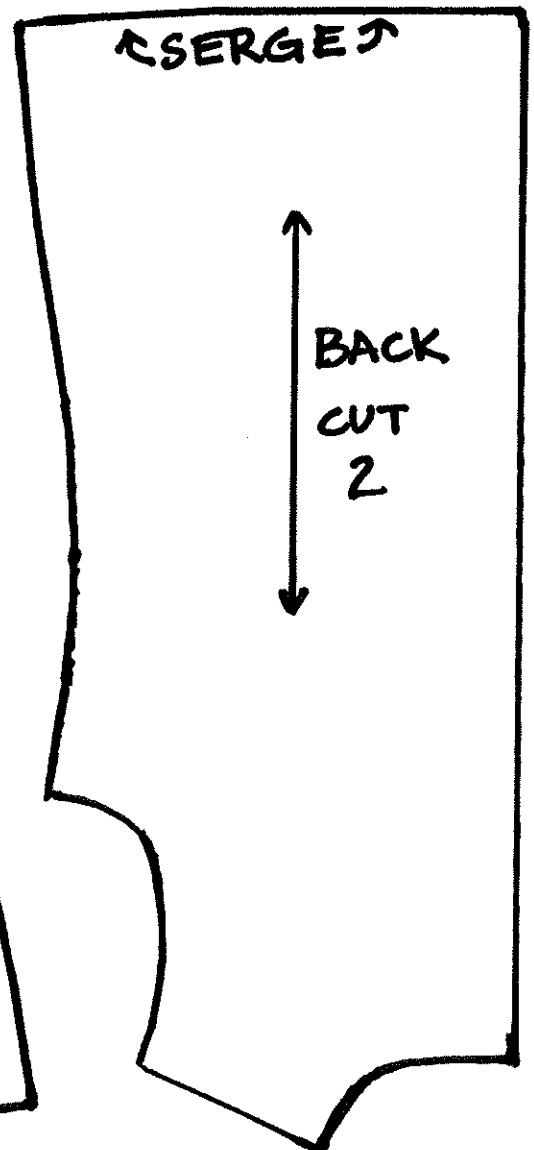
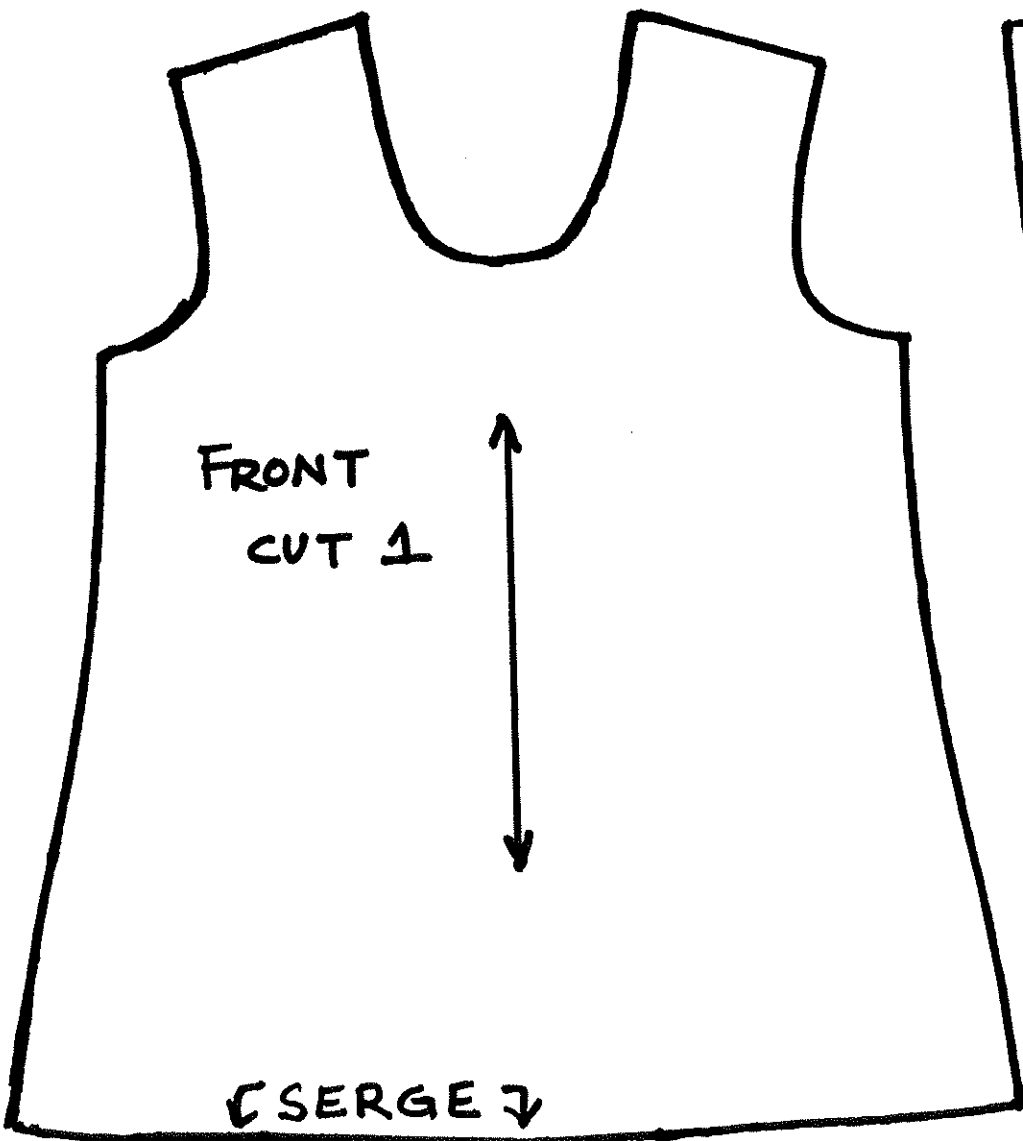
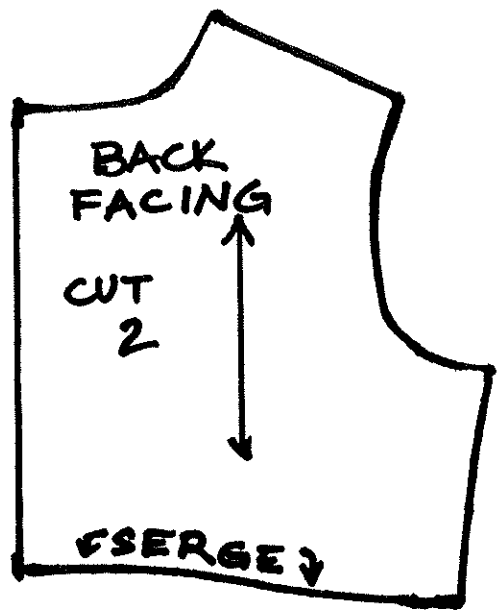
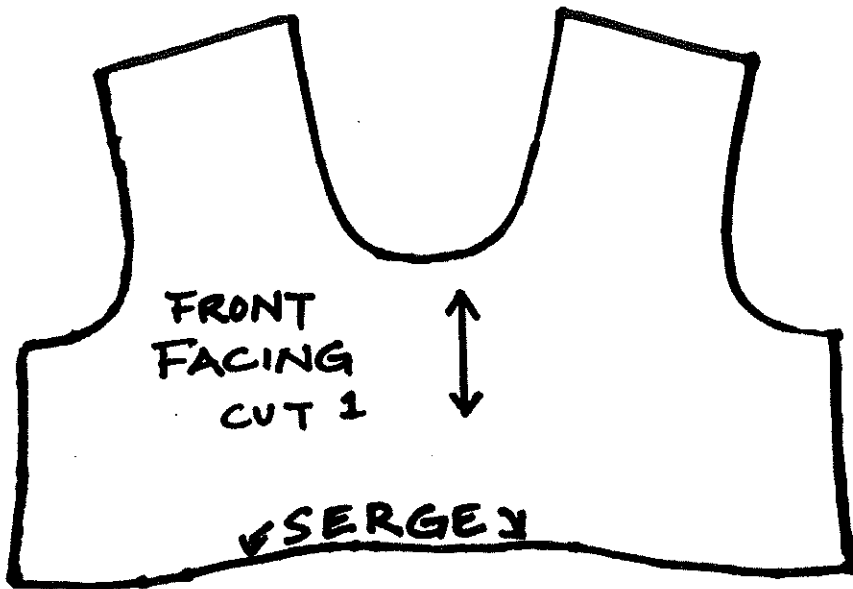
A hand-drawn pattern for a tank top. The pattern consists of a main body and a separate rectangular piece. The main body has a curved neckline and a curved hem. The rectangular piece is intended to be a lace overlay. Handwritten text provides instructions: 'FOLD' with an arrow pointing to the left edge of the rectangle, 'CUT 1 on FOLD' indicating the quantity and cutting method, and 'LACE OVERLAY for TANK TOP' describing the piece's purpose.

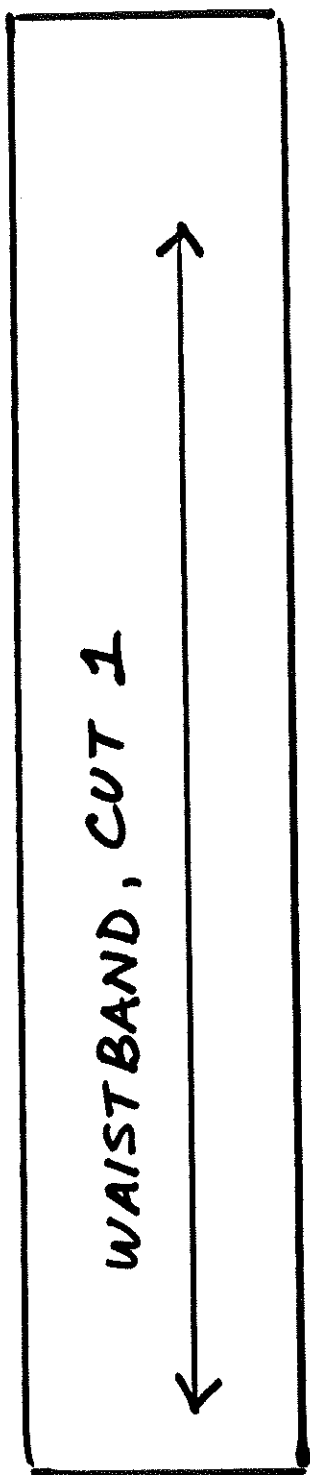
← FOLD

CUT
1
on
FOLD

LACE
OVERLAY
for TANK
TOP

TANK TOP $\frac{1}{4}$ " SEAMS





"JEGGINGS"

USE STRETCH DENIM

DOUBLE TOPSTITCH

SIDE SEAMS, HEMS, ETC.

WITH CONTRASTING

THREAD.

"JEGGINGS"

1/4" SEAMS

